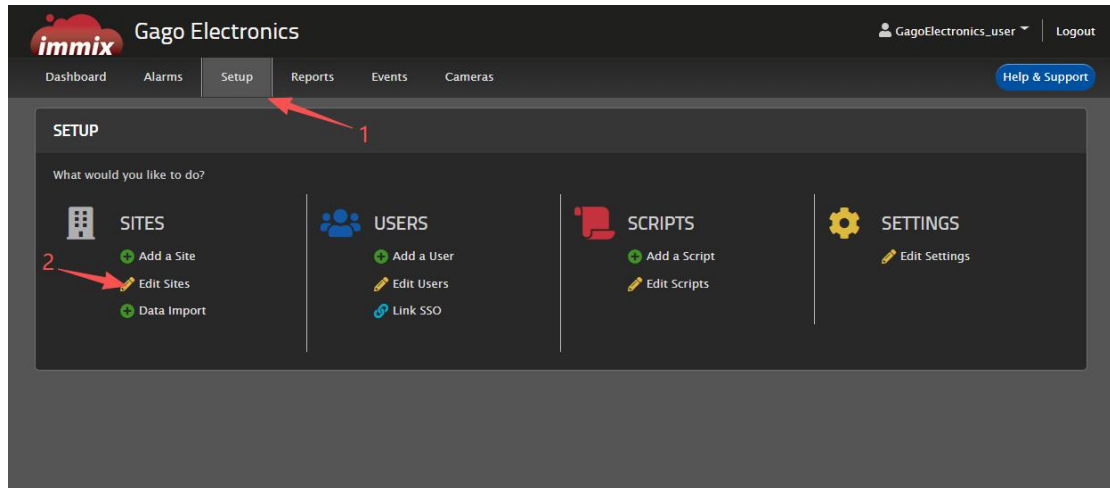


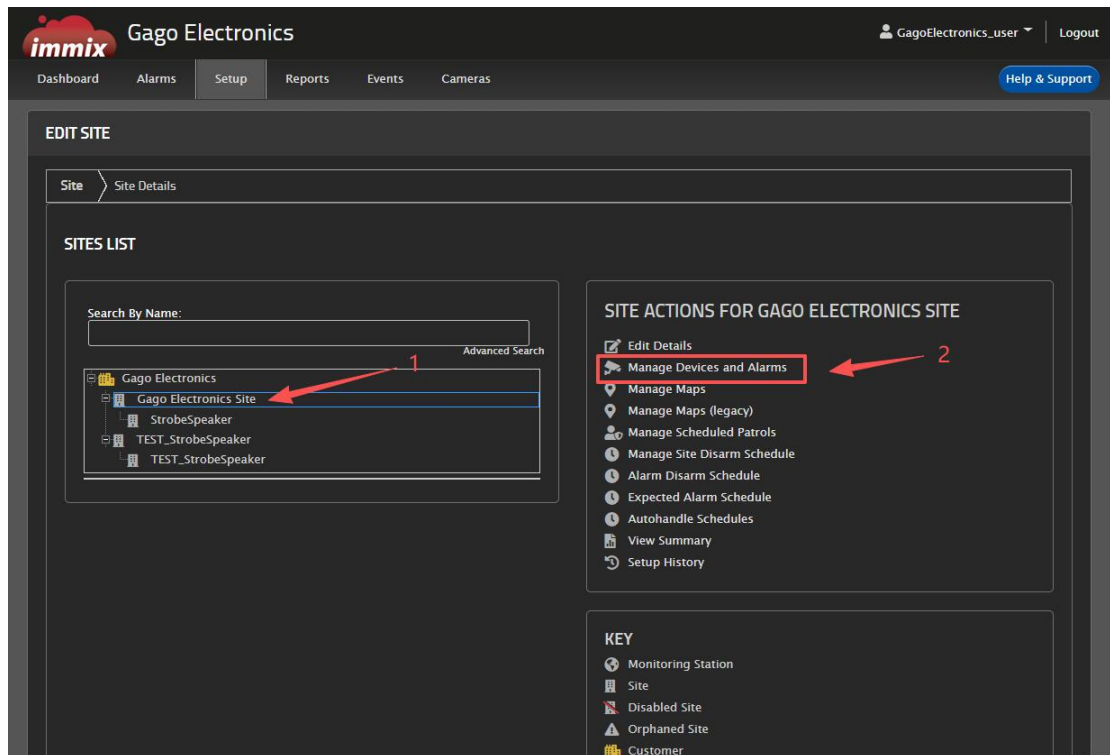
Immix_StrobeSpeaker Operation Manual

1.Video And Audio Intercom

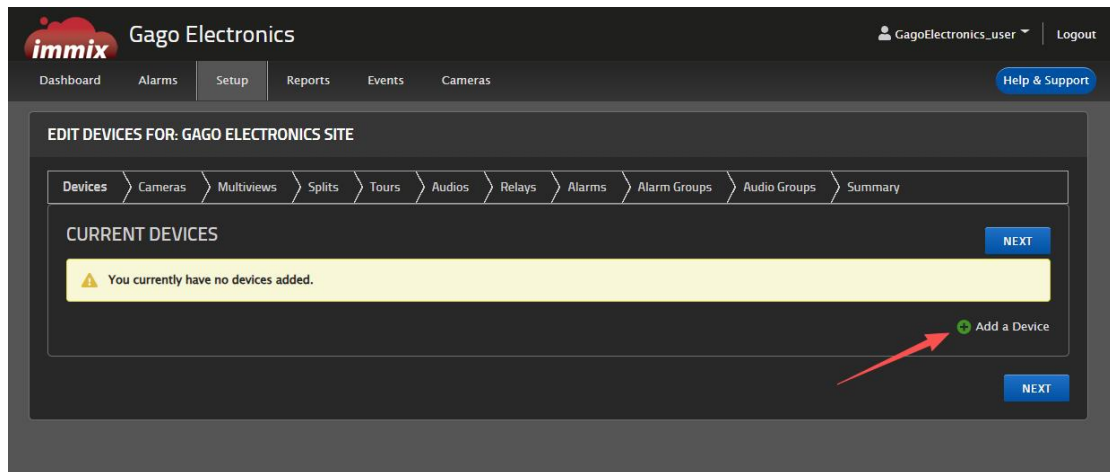
1.1、Set-up Account



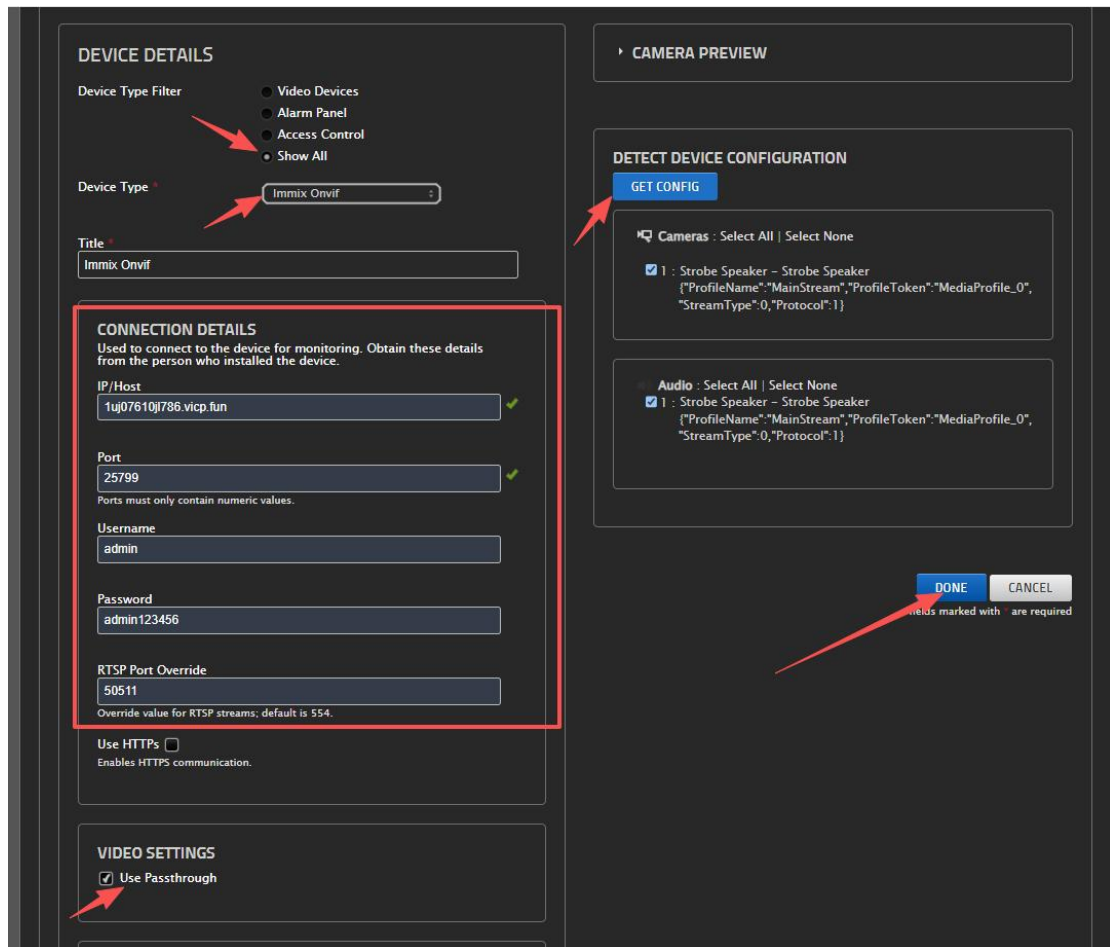
1.2、Edit Account Info.



1.3. Add New Account



1.4. Edit Account Info



SITE SUMMARY REPORT

GetReport.ashx 1 / 1 - 83% + [Navigation icons]



1

Private and Confidential

Setup Report for Gago Electronics Site

Devices

Runaway (Runaway)
Identifier: 640

No Alarms (No Alarms)
Identifier: 722

Immix Onvif (Immix Onvif)
Identifier: 758
IP Address: 1uj07610j786.vicp.fun
Port: 25799
Username: admin
Password: admin123456
Cameras:
Input: 1, Name: Strobe Speaker - Strobe Speaker
Individual Audio Devices:
Input: 1, Name: Strobe Speaker - Strobe Speaker

PREVIOUS FINISH

1.6. Listen/Talk Entrance, Open Cameras --> Listen (Off/On) --> Talk (Press)

immix Gago Electronics GagoElectronics_user Logout

Dashboard Alarms Setup Reports Events Cameras [Help & Support](#)

ALARMS 4 Armed Sites 0 Disarmed Sites 0 ECare Failed [FIRSTLINE](#)

TIME	LOCATION	EVENT	PRIORITY	ALARM COUNT
No Alarms				

Patrols (3) Parked Events (0) On Test (0)

TIME	LOCATION	PATROL NOTE
3/10/2026 1:55:17 AM	StrobeSpeaker	Site Check
3/10/2026 2:13:09 AM	TEST StrobeSpeaker	Site Check
3/10/2026 8:32:55 AM	Gago Electronics Site	Site Check

[PROCESS ALARM](#)

[MANUAL PATROL](#)

[SITE CHECK](#)

PROCESSING EVENTS

No Events Being Processed

SYSTEM EVENTS LIST [REVIEW SYSTEM EVENTS](#)

CREATED	DETAILS
3/12/2026 4:17:37 PM	Exception occurred during alarm process: Response status code does not indicate success: 401 (Unauth

Gago Electronics Site Details MultiView Park Event Close Event

Search by Name

Cameras

Strobe Speaker - Strobe Speaker

Audio

Strobe Speaker - Strobe Speaker

Listen Talk

Strobe Speaker - Strobe Speaker

Recording

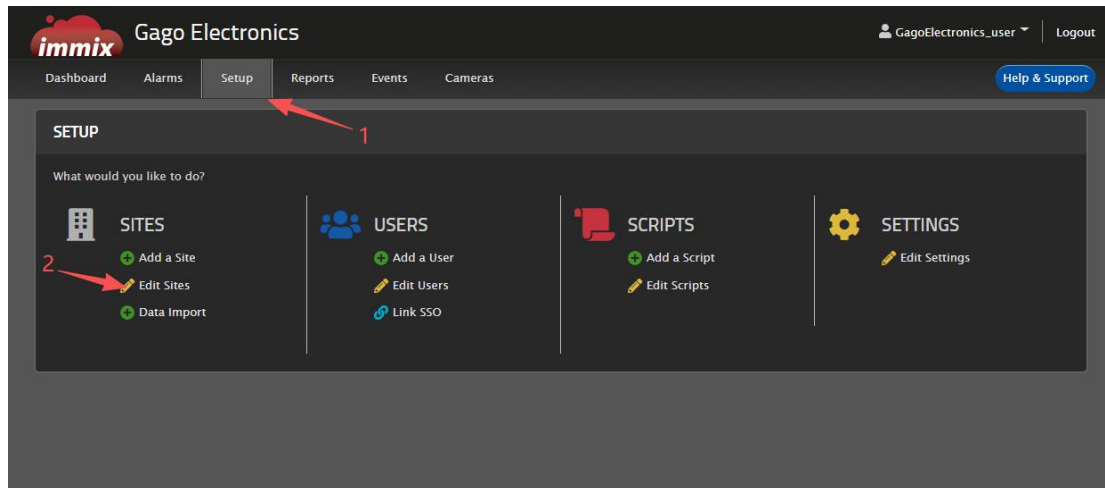
2024-03-13 10:37:31 AM

Event Details

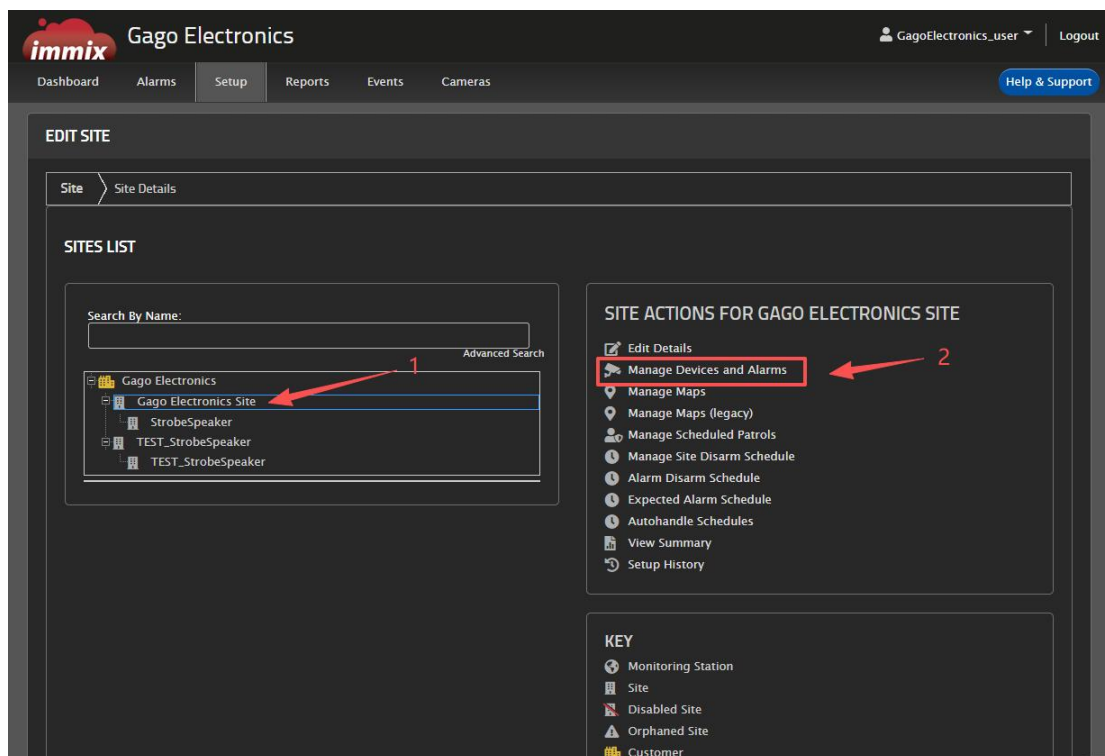
Time	Site Time	Details
3/13/2026 10:37:31 AM	3/13/2026 10:37:31 AM	Audio Strobe Speaker - Strobe Speaker set to Receive
3/13/2026 10:37:28 AM	3/13/2026 10:37:28 AM	Audio Strobe Speaker - Strobe Speaker set to Receive Off

2. Alarm And Relay

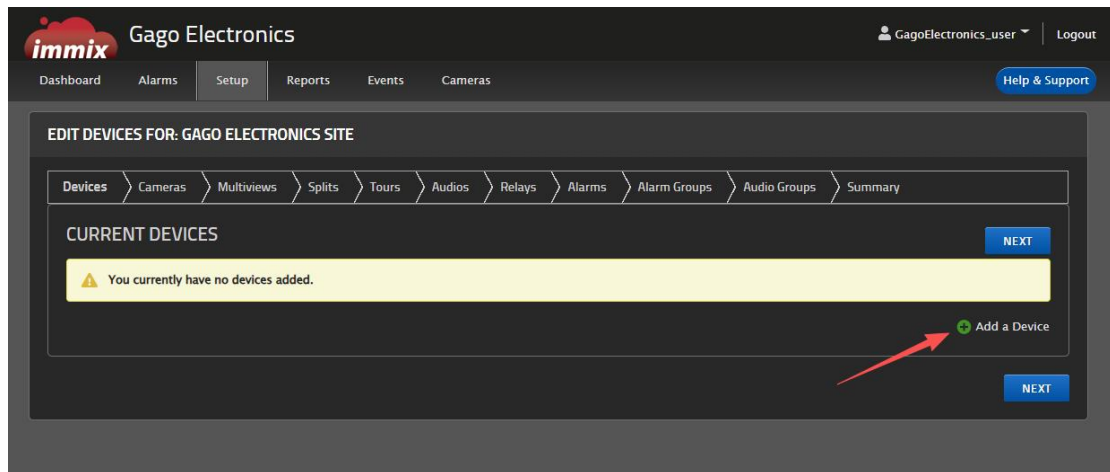
2.1、 Set-up Account



2.2、 Edit Account Info.



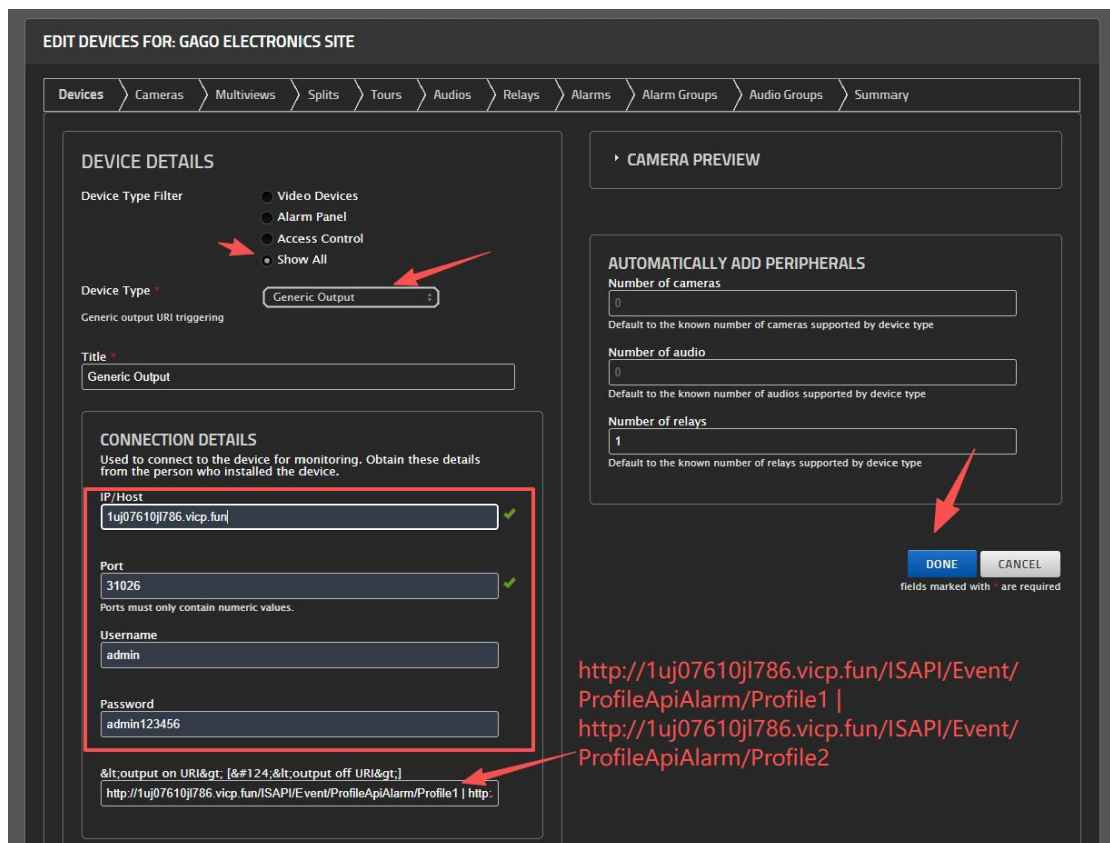
2.3、 Edit Alarm Info



`http://1uj07610jl786.vicp.fun/ISAPI/Event/ProfileApiAlarm/Profile1 | http://1uj07610jl786.vicp.fun/ISAPI/Event/ProfileApiAlarm/Profile2`

"|" The URL before the indicates “relay on,” and the URL after the "|" indicates “relay off.”

For detailed configuration information, please refer to the API documentation.



`http://1uj07610jl786.vicp.fun/ISAPI/Event/ProfileApiAlarm/Profile1 | http://1uj07610jl786.vicp.fun/ISAPI/Event/ProfileApiAlarm/Profile2`

If you need multiple alert URLs, you can configure multiple Generic Outputs.

immix Gago Electronics GagoElectronics_user | Logout

Dashboard Alarms **Setup** Reports Events Cameras Help & Support

EDIT DEVICES FOR: GAGO ELECTRONICS SITE

Devices > Cameras > Multiviews > Splits > Tours > Audios > Relays > Alarms > Alarm Groups > Audio Groups > Summary

CURRENT DEVICES NEXT

DEVICE NAME	DEVICE TYPE	IP/HOST	PORT	PASSTHROUGH	
Generic Output1	Generic Output	1uj07610jl786.vicp.fun	31026	<input type="radio"/>	
Generic Output2	Generic Output	1uj07610jl786.vicp.fun	31026	<input type="radio"/>	
Immix Onvif	Immix Onvif	1uj07610jl786.vicp.fun	31026	<input checked="" type="radio"/>	

+ Add a Device

NEXT

immix Gago Electronics GagoElectronics_user | Logout

Dashboard Alarms Setup **Reports** Events Cameras Help & Support

EDIT DEVICES FOR: GAGO ELECTRONICS SITE

Devices > Cameras > Multiviews > Splits > Tours > Audios > **Relays** > Alarms > Alarm Groups > Audio Groups > Summary

CURRENT RELAY DEVICES PREVIOUS NEXT

RELAY NAME	DEVICE NAME	INPUT	INPUT2	
Generic Output relay (2)	Generic Output1	1	-1	
Generic Output relay (1)	Generic Output2	1	0	

+ Add a Relay

PREVIOUS **NEXT**

Setup Report for Gago Electronics Site

Devices

Runaway (Runaway)
Identifier: 640

No Alarms (No Alarms)
Identifier: 722

Generic Output1 (Generic Output)
Identifier: 885
IP Address: 1uj07610j786.vicp.fun
Port: 31026
Username: admin
Password: admin123456
Individual Relay Devices:
Input: 1, Name: Generic Output relay (2)

Immix Onvif (Immix Onvif)
Identifier: 886
IP Address: 1uj07610j786.vicp.fun
Port: 31026
Username: admin
Password: admin123456
Cameras:
Input: 1, Name: Strobe Speaker - Strobe Speaker
Individual Audio Devices:
Input: 1, Name: Strobe Speaker - Strobe Speaker

Generic Output2 (Generic Output)
Identifier: 887
IP Address: 1uj07610j786.vicp.fun
Port: 31026
Username: admin
Password: admin123456
Individual Relay Devices:

PREVIOUS FINISH

2.4. Alarm On/Off

immix Gago Electronics GagoElectronics_user Logout

Dashboard **Alarms** Setup Reports Events Cameras Help & Support

ALARMS 3 Armed Sites 1 Disarmed Sites 0 ECare Failed FIRSTLINE

TIME	LOCATION	EVENT	PRIORITY	ALARM COUNT
No Alarms				

Patrols (1) Parked Events (0) On Test (0)

TIME	LOCATION	PATROL NOTE
4/17/2026 3:39:03 AM	Gago Electronics Site	Site Check

PROCESS ALARM
MANUAL PATROL
SITE CHECK

PROCESSING EVENTS

No Events Being Processed

Cameras

Search By Name

Strobe Speaker - Strobe Speaker

Audio

Audio Groups

Relays

Generic Output relay (2) On Off

Generic Output relay (1) On Off

Edge Devices

Problems Audit Event Maps Scripts

Details

AM Relay Generic Output relay (1) set to Off

AM Relay Generic Output relay (1) set to On

AM Relay Generic Output relay (1) set to Off